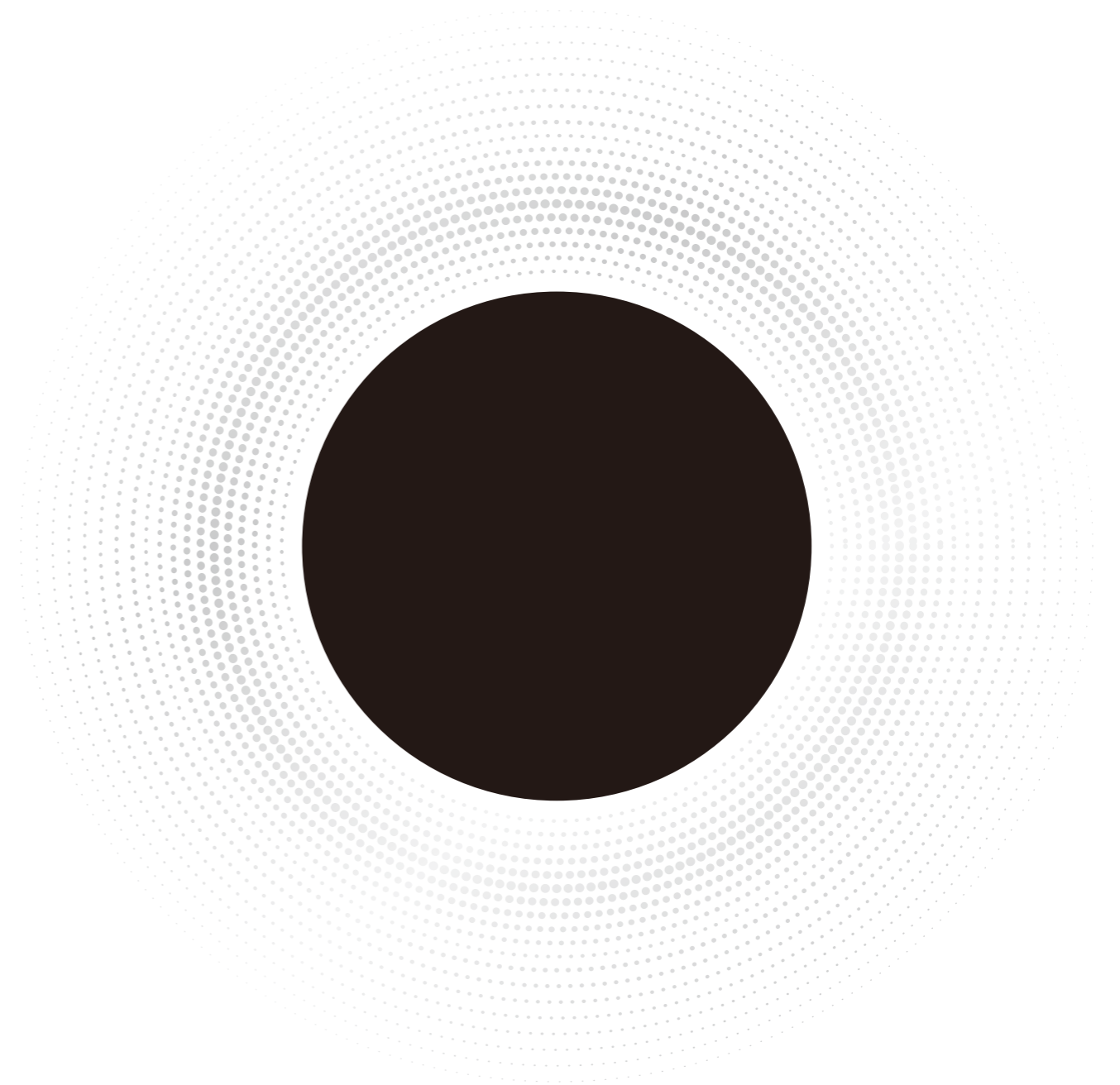


Better Life with Security and Wisdom



ZHUHAI UNITECH POWER TECHNOLOGY CO., LTD.

 No. 68, Jinhong 7th Road, High-tech Zone,
Zhuhai City, Guangdong Province

 www.ut.com.cn

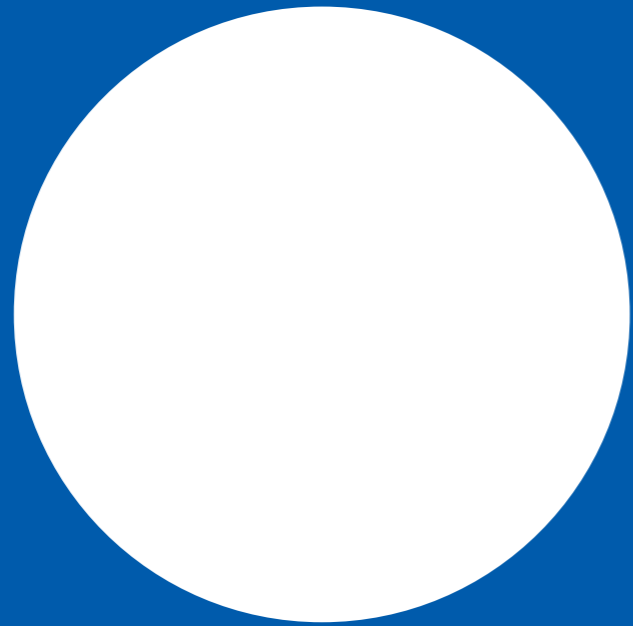
 Email unitech@ut.cn

 Technical support hotline: **400 833 8286**



Please follow the official
public account

ZHUHAI UNITECH POWER TECHNOLOGY CO., LTD.



CONTENTS



Company profile

More than 50% market share of core products

Company Introduction	[04 / P]
Development History	[05 / P]
R&D Innovation	[07 / P]
Smart Manufacturing	[09 / P]
Quality Control	[10 / P]
Marketing Services	[11 / P]
Honorary Achievements	[13 / P]



Product Portfolio

Core Technologies	[16 / P]
Product Platforms	[17 / P]
Business System	[19 / P]
Four Major Product Families	[21 / P]
Power Generation Solutions	[26 / P]
Substation Solutions	[27 / P]
Power Distribution Solutions	[28 / P]
Rail Transit Solutions	[29 / P]
Petrochemical Solutions	[30 / P]
Coal and Mining Solutions	[31 / P]
Steel and Metallurgical Solutions	[32 / P]
Typical Projects	[33 / P]



Sustainable development

Partners	[36 / P]
Social Responsibilities	[37 / P]
Enterprise Vision	[39 / P]

COMPANY INTRODUCTION

Adhere to the principle of technology-driven security
 Strengthen intrinsic security with technological innovation
 Promote digital transformation in the industry
 Build a safe, efficient, green and intelligent new industrial ecosystem

COMPANY PROFILE

Established in 1998, Zhuhai Unitech Power Technology Co., Ltd. is committed to provides customers with industrial operation and maintenance safety and automation solutions., focusing on security and efficiency, and improving industrial security production using innovative technologies.

50% market share 

More than 50% market share of core products

2000+ employees 

More than 2,000 employees; more than 50,000 square meters of modern smart park

60000+ projects 

More than 60,000 engineering projects in many fields such as power, rail transit, petrochemicals, metallurgy, coal, etc.

31+26 customers 

31 provinces, municipalities and autonomous regions across China; 26 countries and regions in North America, Southeast Asia and Africa

Positioning-Industrial operation and maintenance



Focus on security and automation



Core Value

Customer first, teamwork
 Continuous innovation, openness and enterprising
 Courage to take responsibility, integrity and transparency



Unitech Spirit

Create uniqueness, pursue excellence



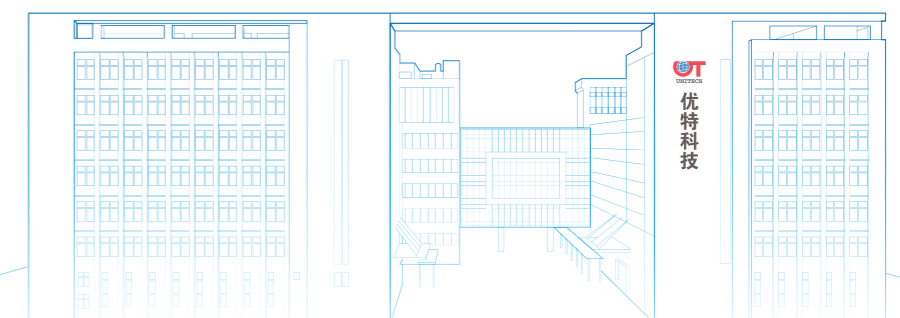
Enterprise Vision

Be a leader in intelligent security technology



Enterprise Mission

Better Life with Security and Wisdom



DEVELOPMENT HISTORY



1985
 Invented microcomputer anti-mislocking technology, safe operation

1999
 Developed the comprehensive automatic protection system to ensure system power supply security

1994
 Developed the first-generation computer keys, exploring substation safety management and control

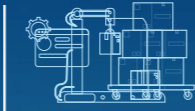
1998
 Established Zhuhai Unitech Power Technology Co., Ltd.

2002
 Won the key national Torch Plan project certificate



2007
 Introduced distribution network safety management and control

2009
 Started industrial security strategy



2013
 Developed rail transit safety management and control



2014
 Opened Unitech new office building.

2015
 Won the Zhuhai Mayor Quality Award, launched power generation security control, explored petrochemical operation safety management and control

2018
 Won the National IPR Demonstration Enterprise, launched the one-button sequential control system

2017
 Won the China Patent Excellence Award, won the Guangdong Provincial Government Quality Award

2019
 Won the first prize for urban rail transit science and technology progress, won the first prize of Guangdong Electric Power Science and Technology



2021
 Opened Zhuhai Unitech Park, upgraded the product strategy to four major product familie



2022
 Won the national manufacturing single champion demonstration enterprise

2023
 Won the top 500 Chinese enterprises in patent strength



Future
 Comprehensively expand into power grid, power generation, rail transit, petrochemical and other industries to build a world-class brand



R&D INNOVATION

Innovation and development

From inheriting R&D philosophy, setting up R&D institutions and teams, accumulating technical resources, to integrating the R&D process through the introduction of the IPD management system, the company is committed to building an innovation-driven culture, implementing the policy of "innovation and development", and creating a number of advanced systems and products at home and abroad.



IPD

Integrated product development process

CMMI5

Software capability maturity



Industry-university-research platform

- Guangdong Power System Automation Engineering Technology R&D Center
- Enterprise Technology Center in Guangdong Province
- Post-Doctoral Research Center
- Industry-university-research bases of Beijing Jiaotong University, University of Macau, Jinan University, Sun Yat-sen University, Jilin University, etc.



15 %

Annual R&D investment of no less than 15% of sales revenue

30 年

30 years of accumulated independent R&D capabilities

7 ↑

Specialized laboratories (two CNAS certifications)

600 +

More than 600 R&D personnel



IPR

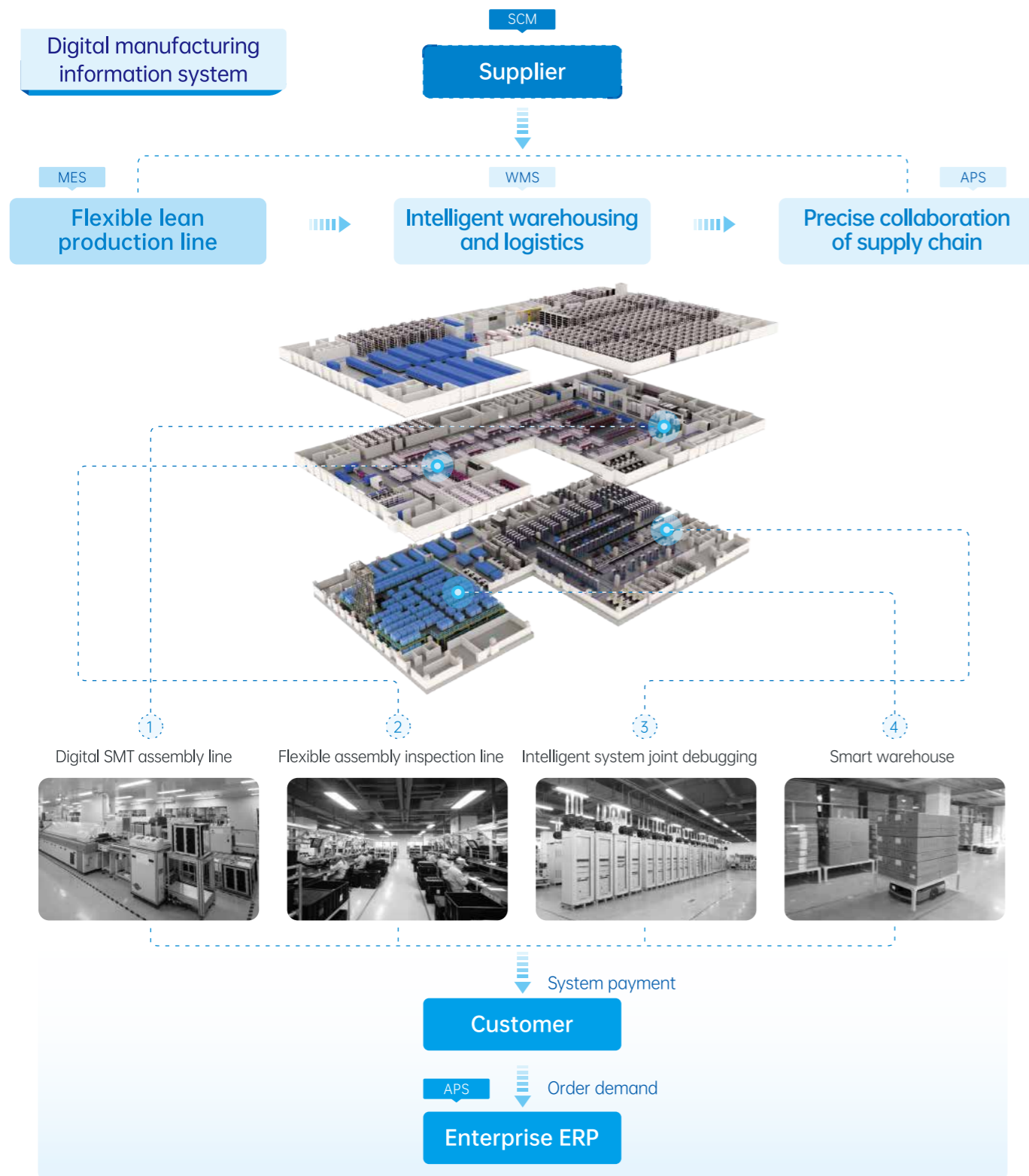
- **1000+** valid authorized patents
 - 20 international patents | 410 invention patents
 - 477 utility model patents | 107 appearance patents
- **15** technical achievement appraisals
 - 3 international leading | 7 international advanced
 - 5 domestic leading
- **21** participation in the compilation of national standards, industry standards, and group standards
- **102** software copyright certificates



Scientific research projects

- **65** key scientific research projects
 - 1 national key R&D plan project
 - 1 MIIT technical transformation project
- **6** national key new products
- **22** provincial scientific research projects
- **35** municipal projects

SMART MANUFACTURING



QUALITY CONTROL

Adhere to the guidance of the excellent performance management model, continuously optimize the management system based on the national quality award evaluation standard GB/T19580 Excellent Performance Evaluation Criteria, and improve organizational performance and overall capabilities. Introduce and establish multiple special quality improvement projects, deepen comprehensive quality management, effectively implement quality control, and continue to provide customers with high-quality products and services.

Full-process quality control

The company has established 5 reliability assurance systems, including design reliability, material selection certification, manufacturing reliability, failure analysis and reliability testing, covering the entire process from product R&D to customer delivery, and achieve the quality control of the entire product life cycle through comprehensive review, testing, commissioning, acceptance, measurement analysis and improvement.

5 

Reliability Assurance Systems

Qualifications

 <p>ISO9001 quality management system</p>	 <p>ISO14001 environmental management system</p>	 <p>ISO27001 information security management system</p>	 <p>ISO45001 occupational health and safety management system</p>
 <p>IPR management system certification</p>	 <p>CNAS laboratory accreditation</p>	 <p>Integrated management system of informatization and industrialization</p>	 <p>Standardized behavior level AAAAA</p>

MARKETING SERVICES



Efficient cloud service digital platform
 +
 National terminal service outlets
 →
 Create a "zero distance" service network that is responsible for users and satisfies users.

1 ↑
 Business cloud platform
 Unitech cloud service

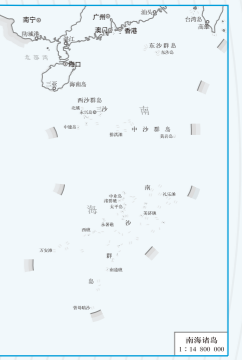
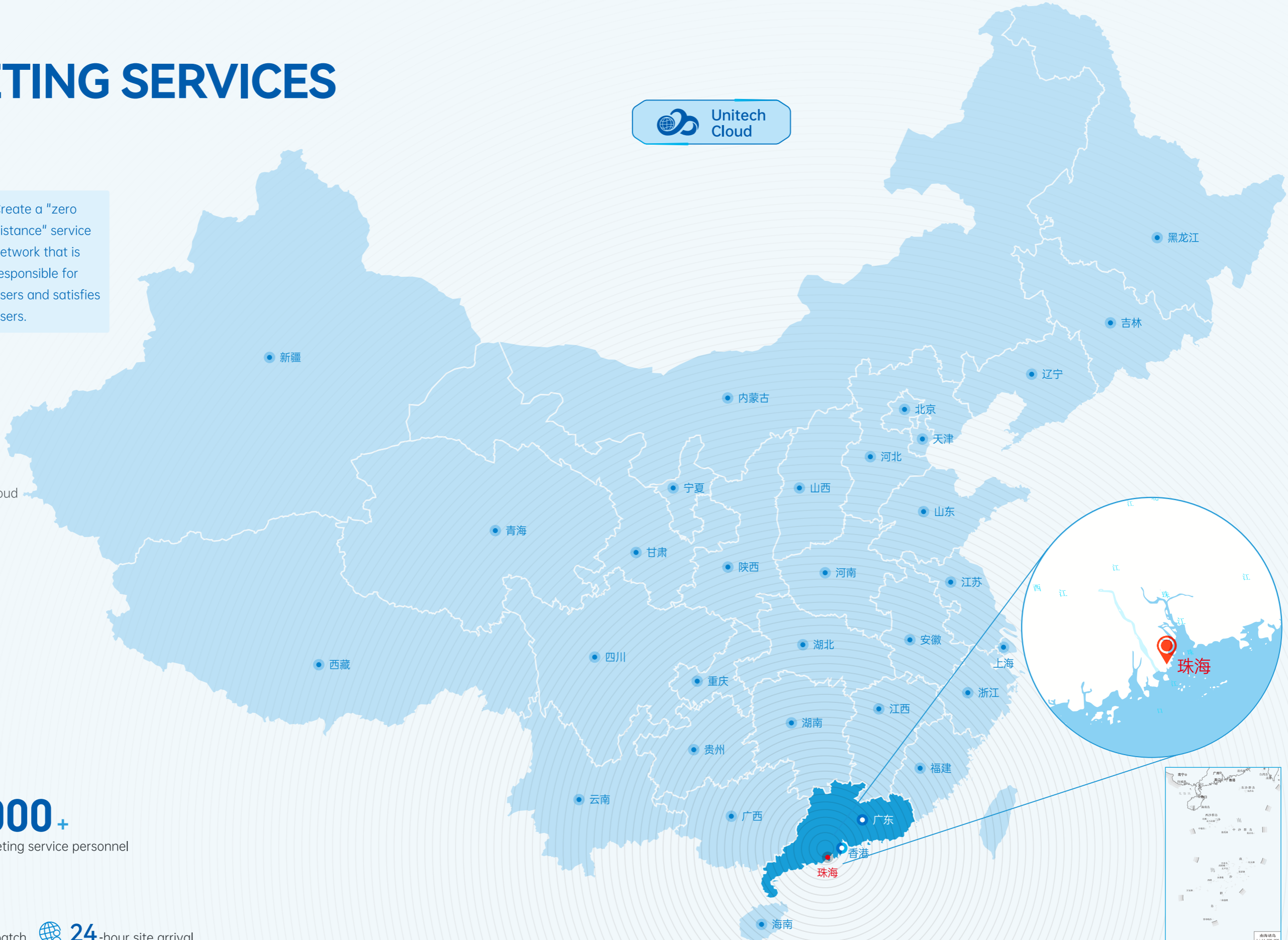
24
 Business service regions

41
 Marketing service centers

24 -hour
 Localized service

1000+
 Marketing service personnel

4-hour personnel dispatch **24**-hour site arrival



HONORARY ACHIEVEMENTS



National Honors

12 items

- National manufacturing industry Single champion demonstration enterprise
- National IPR Demonstration enterprise
- National high-tech enterprise
- Chinese Enterprises Top 500 Patent Strength
- China Patent Excellence Award
- National Torch Program Software Key Enterprises of Industrial Bases
- National Key New Product
- Urban Rail Transit First Prize for Scientific and Technological Progress

Provincial Honors

21 items

- Guangdong Province Government Quality Award
- Guangdong Province Patent Excellence Award
- Guangdong Province Famous and High-tech Products
- Guangdong Electric Power Science First Prize for Technology Award
- Guangdong Province Second Prize for Science and Technology Award
- Guangdong Province Third Prize for Scientific and Technological Progress
- Guangdong Province IPR Demonstration Enterprise
- Guangdong Province Contract Abiding and Trustworthy Enterprise

Municipal Honors

26 items

- Zhuhai City Mayor Quality Award
- Zhuhai City Patent Award Patent Gold Award
- Zhuhai City First Prize for Scientific and Technological Progress
- Innovative Zhuhai Second Prize for Scientific and Technological Progress
- Zhuhai City Outstanding Contribution Award for Promoting Scientific Progress
- Excellent Award of the First Zhuhai Standard Innovation Award
- Zhuhai City Key Enterprises for Intellectual Property protection

*
This page only displays some important honors.



PRODUCT PORTFOLIO

Committed to serving all industrial enterprises
 Focus on the four elements of "people, machines, environment, and management"
 Improve the O&M security for industrial enterprises comprehensively
 Cover all aspects of the power system
 Build a new industrial security management and control system



CORE TECHNOLOGY

Adhering to independent technological innovation and independent control of products, Unitech is committed to provides customers with industrial operation and maintenance safety and automation solutions based on the three core technologies of "process interlocking technology + intelligent monitoring technology + cloud map technology".

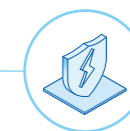


Technical application

- Comprehensive intelligent error prevention
- Maintenance isolation management
- Secondary error prevention
- Press plate monitoring and management
- Ground cable management
- Security tool management
- Two-ticket digitization
- High security lock
- Mobile operation management
- Intelligent verification
- Cloud error prevention

- One-key sequential control
- Dual confirmation of switch status
- Intelligent power distribution and utilization
- Electric energy coordination and balance
- Personnel positioning
- Video intelligent analysis
- Intelligent inspection
- Secondary equipment inspection
- Robot operation
- Status monitoring

Core technologies



Intelligent Error Prevention Technology	Intelligent Monitoring and Control Technology	Business Support Platform
Intelligent ticketing	Main and auxiliary monitoring	Microservice SaaS management and control business platform
Topology error prevention	Communication control	3D digital twin platform
Intelligent interlocking	Microcomputer protection	Distributed cloud atlas platform
Pioneering AMEO language	Intelligent sensing	Intelligent IoT platform

PRODUCT PLATFORMS

UNITECH is committed to building ten major product platforms (safety management and control, main and auxiliary monitoring, safety domain lock control, electrical intelligent operation and maintenance, large models, digital twins, APP, microservices, IoT and video analysis). These product platforms feature modular and componentized design, flexible cross-scenario deployment, and efficient integration. Integrating edge computing and intelligent analysis functions, they can help the power, petrochemical, and rail transit industries quickly achieve digital transformation and high-quality delivery, as well as improve the operational efficiency and system stability of industrial enterprises.

Operation and Inspection Safety Management and Control Platform

Based on the four key elements of safety management for industrial enterprises—personnel, equipment, environment, and management—the system ensures intrinsic safety for personnel, equipment, and the environment during the production process of industrial enterprises.

Primary and Auxiliary Monitoring Platform

Powered by new technologies such as "big data, cloud computing, IoT, mobile internet, and artificial intelligence", this platform provides intelligent solutions for industries including power grids, new energy, and petrochemicals, enabling the development of new power systems.

Youan Domain Lock and Control Platform

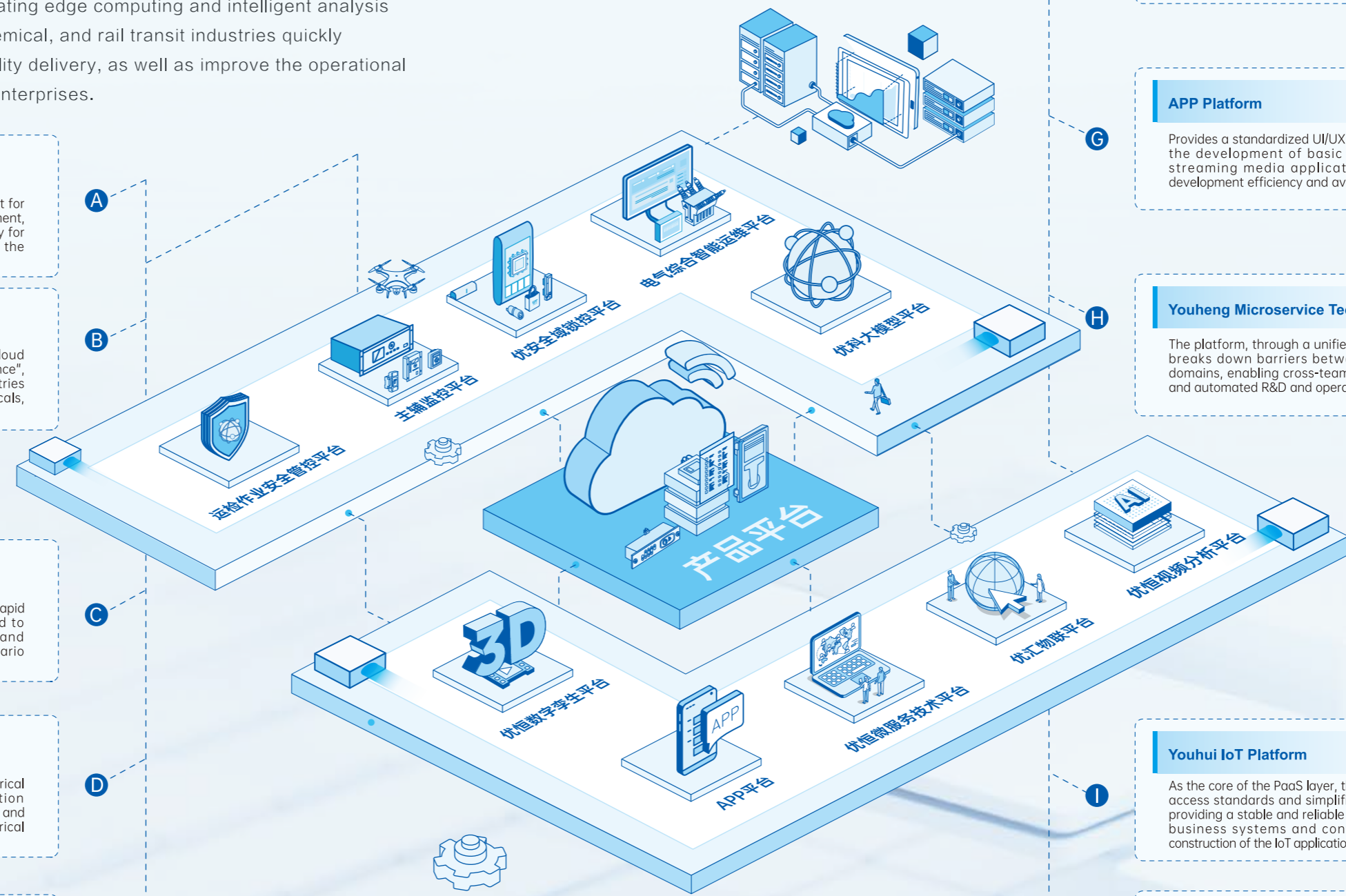
Relying on a modular configuration system, it enables rapid deployment of lock and control solutions adapted to various industry scenarios such as power grids and campuses, forming strong capabilities in fast scenario adaptation and customized services.

Comprehensive Intelligent Electrical Operation and Maintenance Platform

This platform integrates multi-source data from electrical equipment to build an intelligent digital operation management platform, supporting intelligent operation and maintenance throughout the entire lifecycle of electrical equipment.

Youke Large Model Platform

Built on a unified full-stack base, with integrated visual orchestration and multi-agent collaboration capabilities, it helps to create precise processes, enables autonomous planning, tool invocation, and business flow automation, thereby enhancing efficiency and safety.



Youheng Digital Twin Platform

By leveraging four core capabilities—resource management, scenario construction, twin configuration, and visual display—a comprehensive digital spatial mapping system is established.

APP Platform

Provides a standardized UI/UX component library to enable the development of basic functions, graphics, and streaming media applications, thereby improving development efficiency and avoiding redundant work.

Youheng Microservice Technology Platform

The platform, through a unified business integration base, breaks down barriers between multiple systems and domains, enabling cross-team synchronous development and automated R&D and operations pipelines.

Youhui IoT Platform

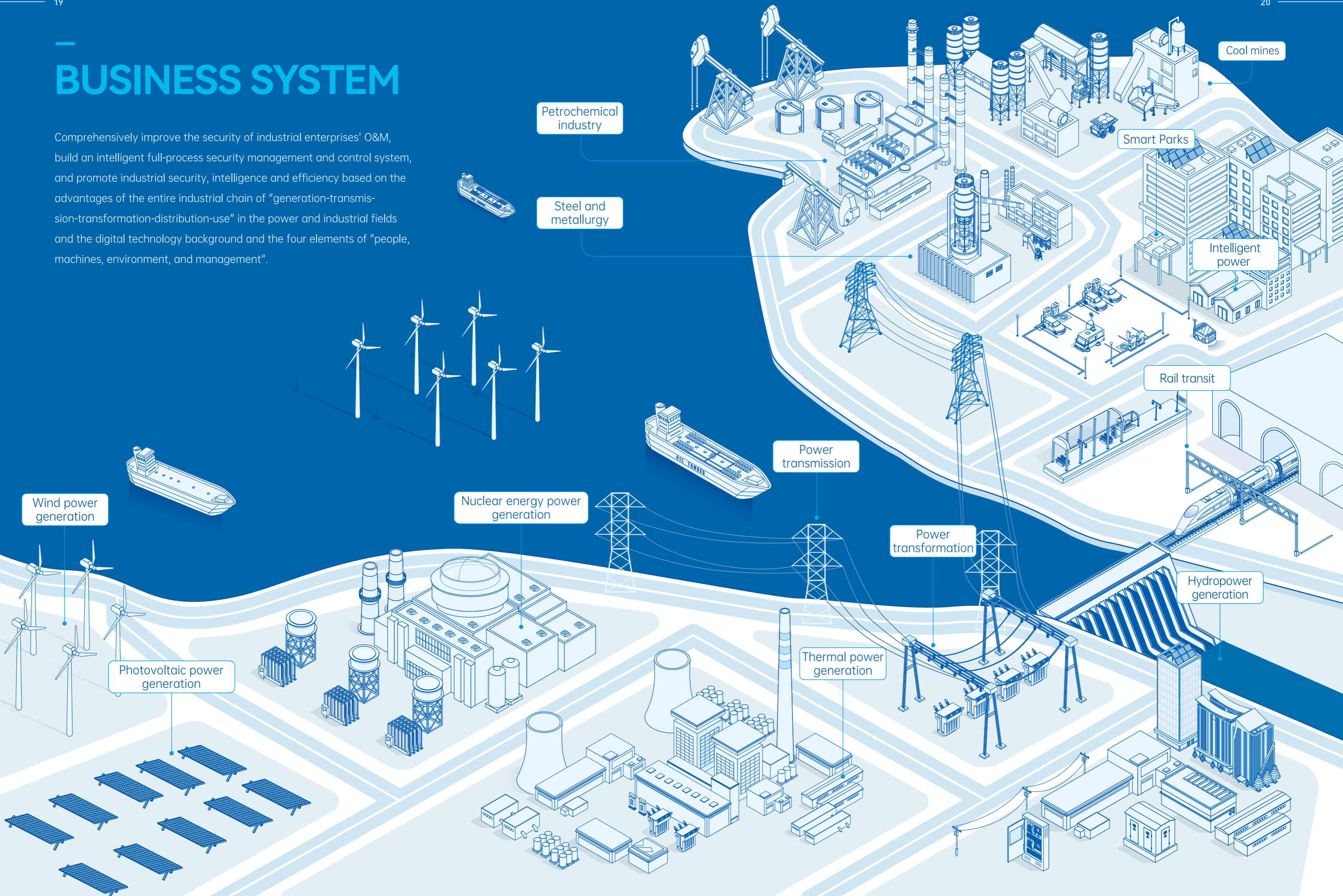
As the core of the PaaS layer, the IoT platform unifies device access standards and simplifies maintenance processes, providing a stable and reliable management foundation for business systems and continuously supporting the construction of the IoT application ecosystem.

Youheng Video Analysis Platform

The platform builds three major vertical scenario models—personnel safety, equipment status, and environmental anomalies—along with over 100 algorithm models, enabling flexible customization of algorithms for various scenarios and professional empowerment.

BUSINESS SYSTEM

Comprehensively improve the security of industrial enterprises' O&M, build an intelligent full-process security management and control system, and promote industrial security, intelligence and efficiency based on the advantages of the entire industrial chain of "generation-transmission-transformation-distribution-use" in the power and industrial fields and the digital technology background and the four elements of "people, machines, environment, and management".



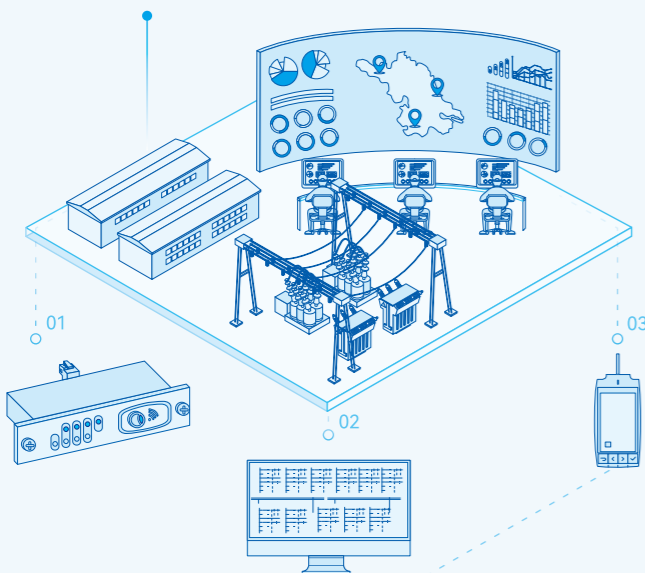
FOUR PRODUCT FAMILIES

Guided by advanced security theories and adhering to the product concept of "What others do not have, we create; what others have, we improve; what others improve, we innovate," we have independently developed four major product series: safety management and control, intelligent monitoring and control, intelligent auxiliary control and intelligent lock control. These products form an intelligent management system for new industrial security, helping customers build inherently safe enterprises.

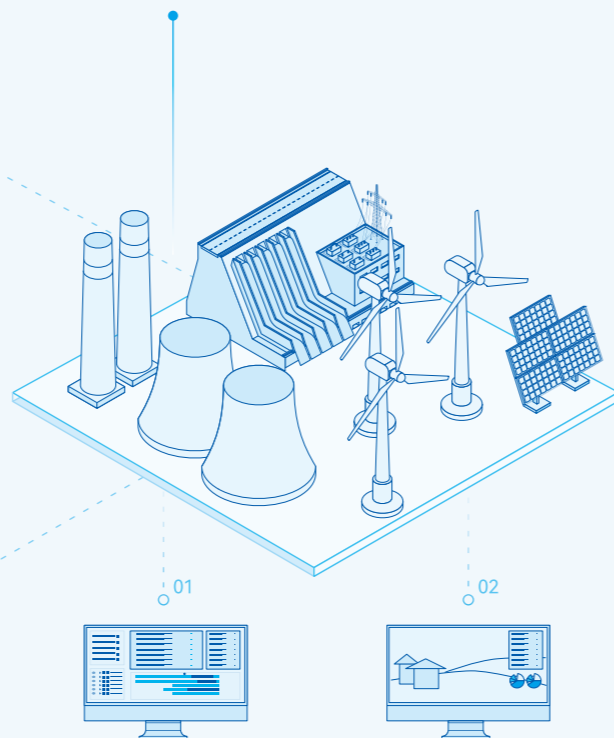
Safety Management and Control

Implement the concept of "technology-driven security", and build a comprehensive, mandatory, and proactive security control system based on the security management elements of "people, machines, environment, and management" of industrial enterprises by using the digital error-proof intelligent control and intelligent platform as a technical means, to ensure the security of personnel, equipment, and environment in the production process of industrial enterprises.

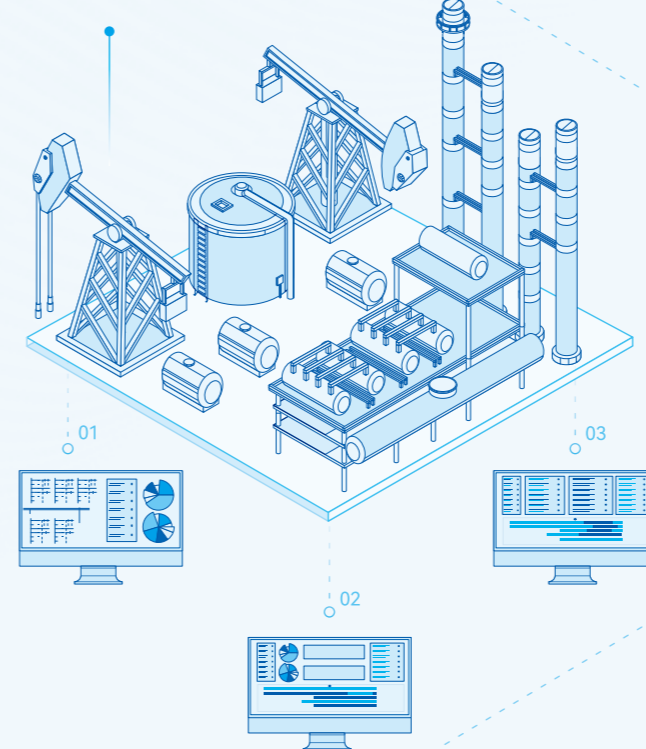
JOYO-J excellent centralized control and error prevention integrated operating system
 UT-F600B substation operation and inspection security management system
 UT-F700Z comprehensive intelligent error prevention system



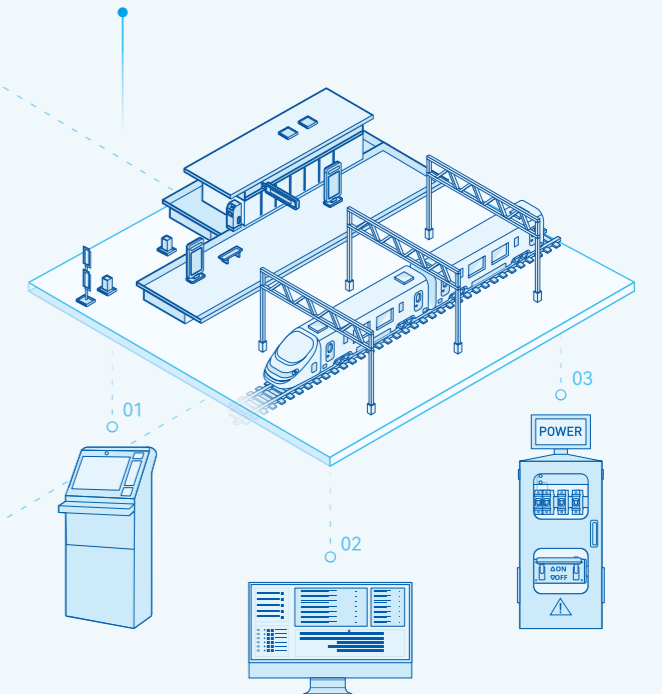
UT-F600D power generation enterprise operation security management system



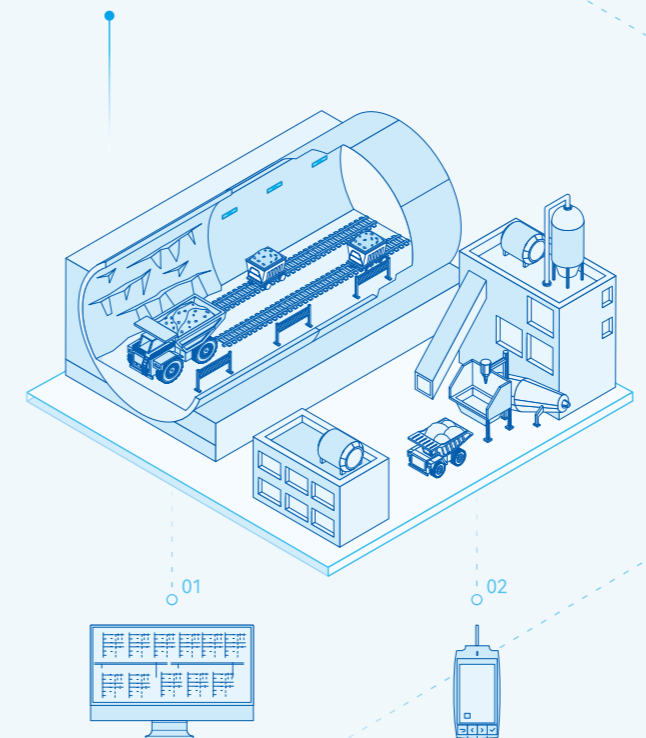
UT-F600S petrochemical power supply security management system
 UT-F600S2 petrochemical process operation security management system



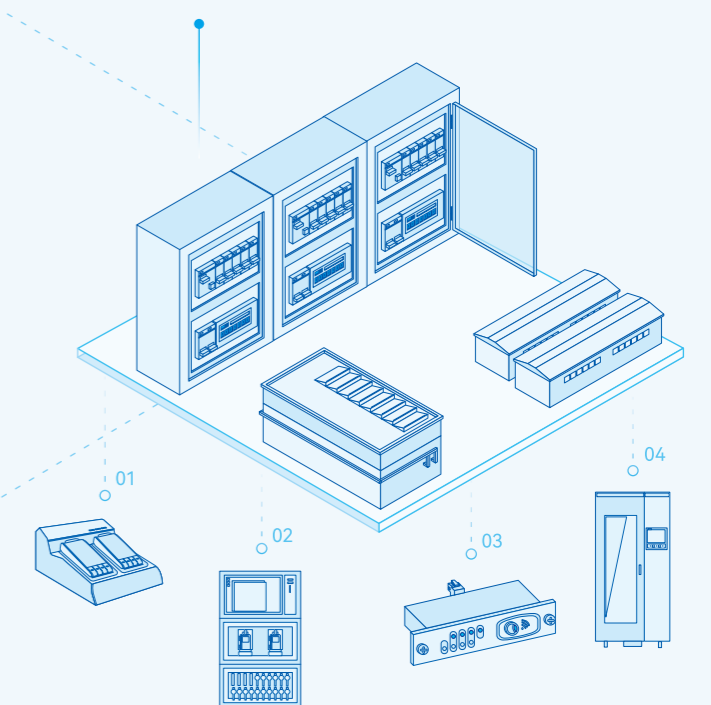
JOYO-H rail transit power supply operation security management system
 JOYO-H1 vehicle depot maintenance security interlocking management system
 UT-F600H3 dispatch management system



UT-F600M coal mine electrical operation security management system



UT-0400 Intelligent ground cable management system
 UT-050 Intelligent key management system
 UT-7710 Intelligent Security Equipment Management System

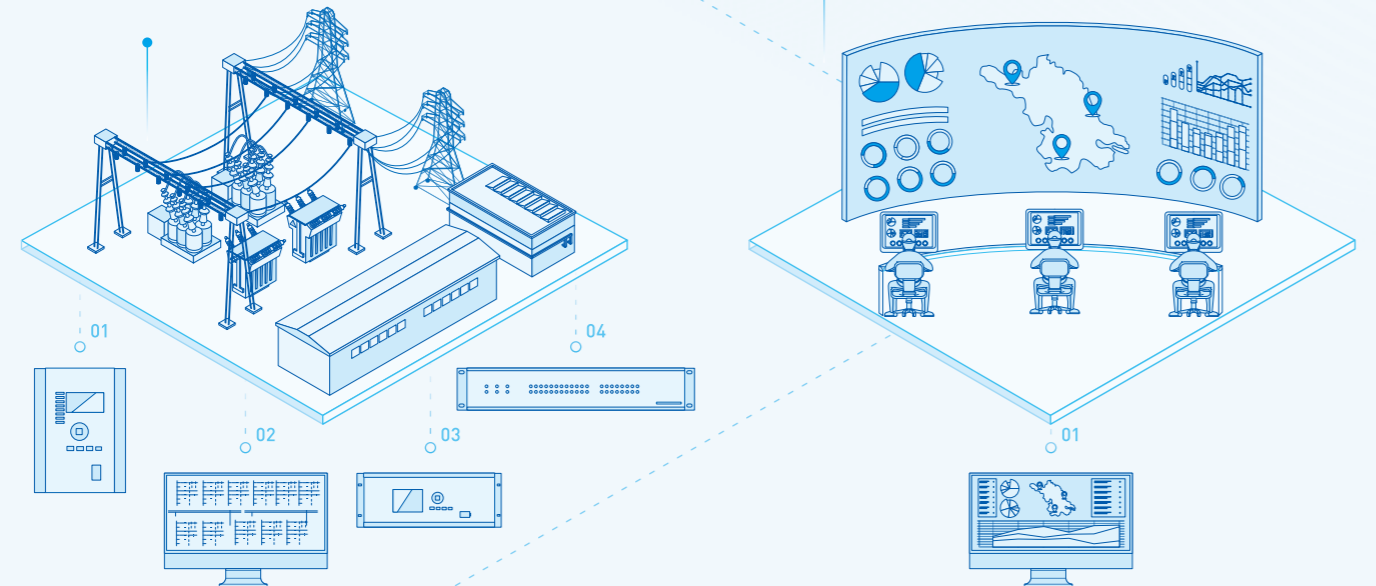


Intelligent Monitoring and Control

To address the needs of State Grid, China Southern Grid intelligent substations and digital transformation of various industries, Unitech has built a new-generation intelligent monitoring and control platform with the characteristics of "Intelligent > Security > Open > Comprehensive > Unified", providing intelligent solutions for various industries such as power grid, new energy, petrochemical, and effectively supporting the construction of new power systems.

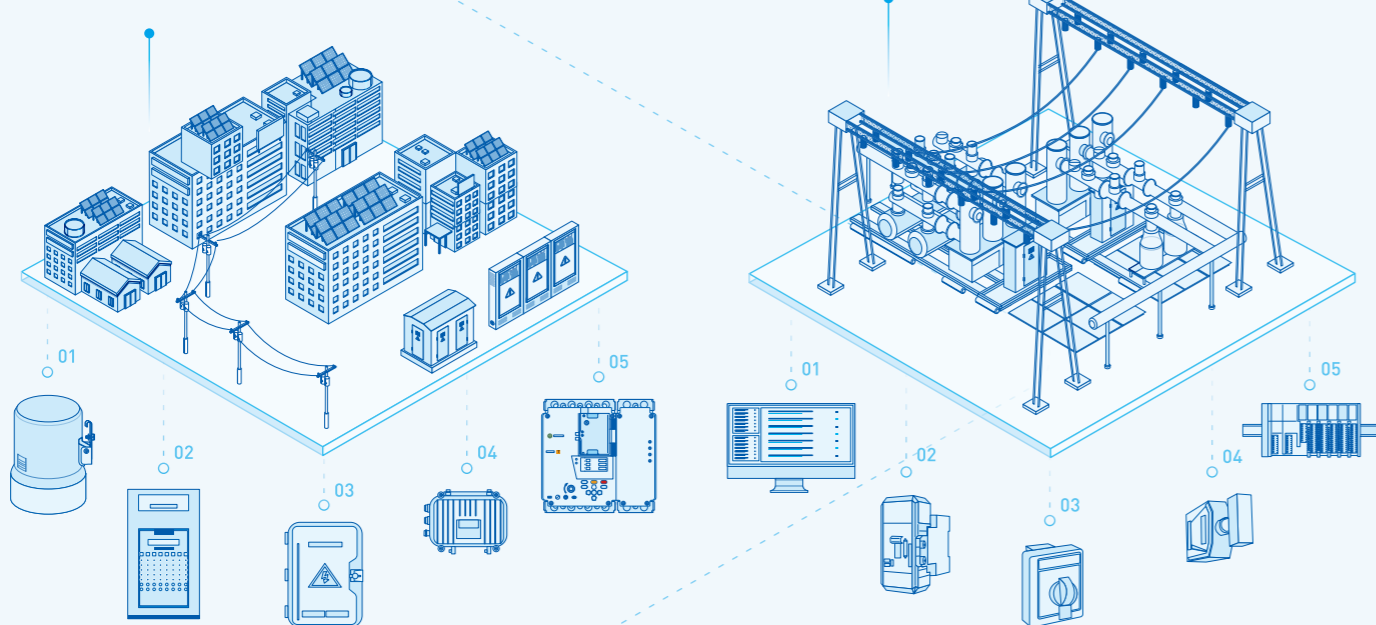
- JOYO-A plant and station integrated automation system
- UT-Z300B intelligent substation integrated automation system
- UT-Z300S secondary intelligent monitoring system
- JOYO-A1 substation one-button sequential control system

- JOYO-F dispatching automation system
- JOYO-K centralized control automation system



- UT-Z300P distribution automation system
- UT-Z300D new energy automation system

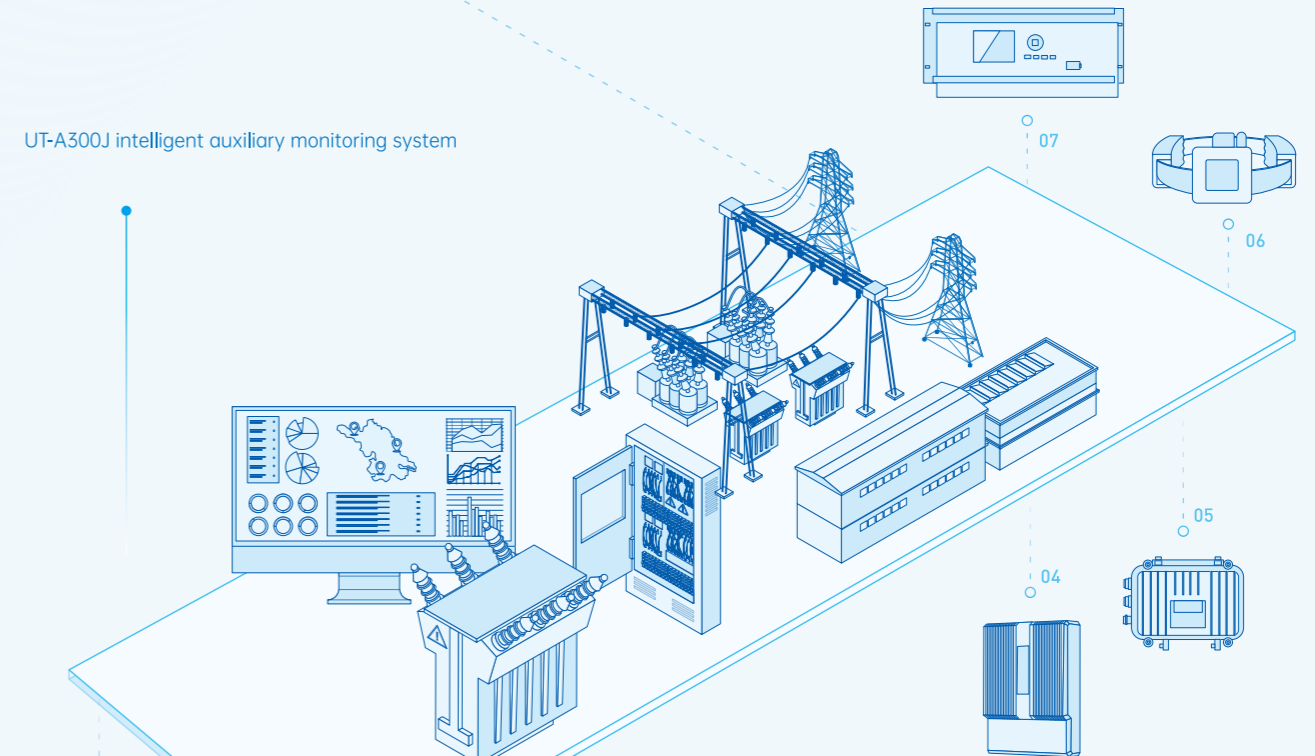
- JOYO-H2 contact network visual grounding management system



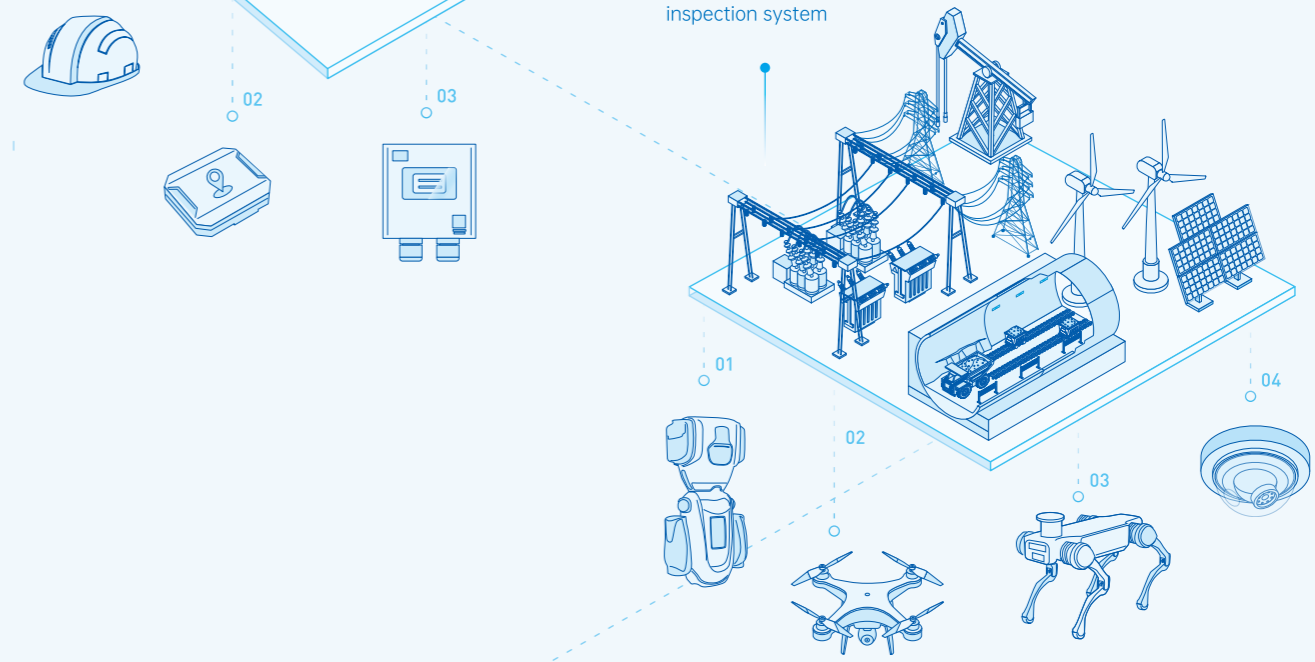
Intelligent Auxiliary Control

With digital power as the guide, AI as the core and IoT technology as the foundation, collaboratively build an intelligent, efficient, and safe auxiliary control system by leveraging technologies such as auxiliary monitoring, intelligent inspection, and intelligent monitoring, to usher in a new era of digital and intelligent industrial operations.

- UT-A300J intelligent auxiliary monitoring system

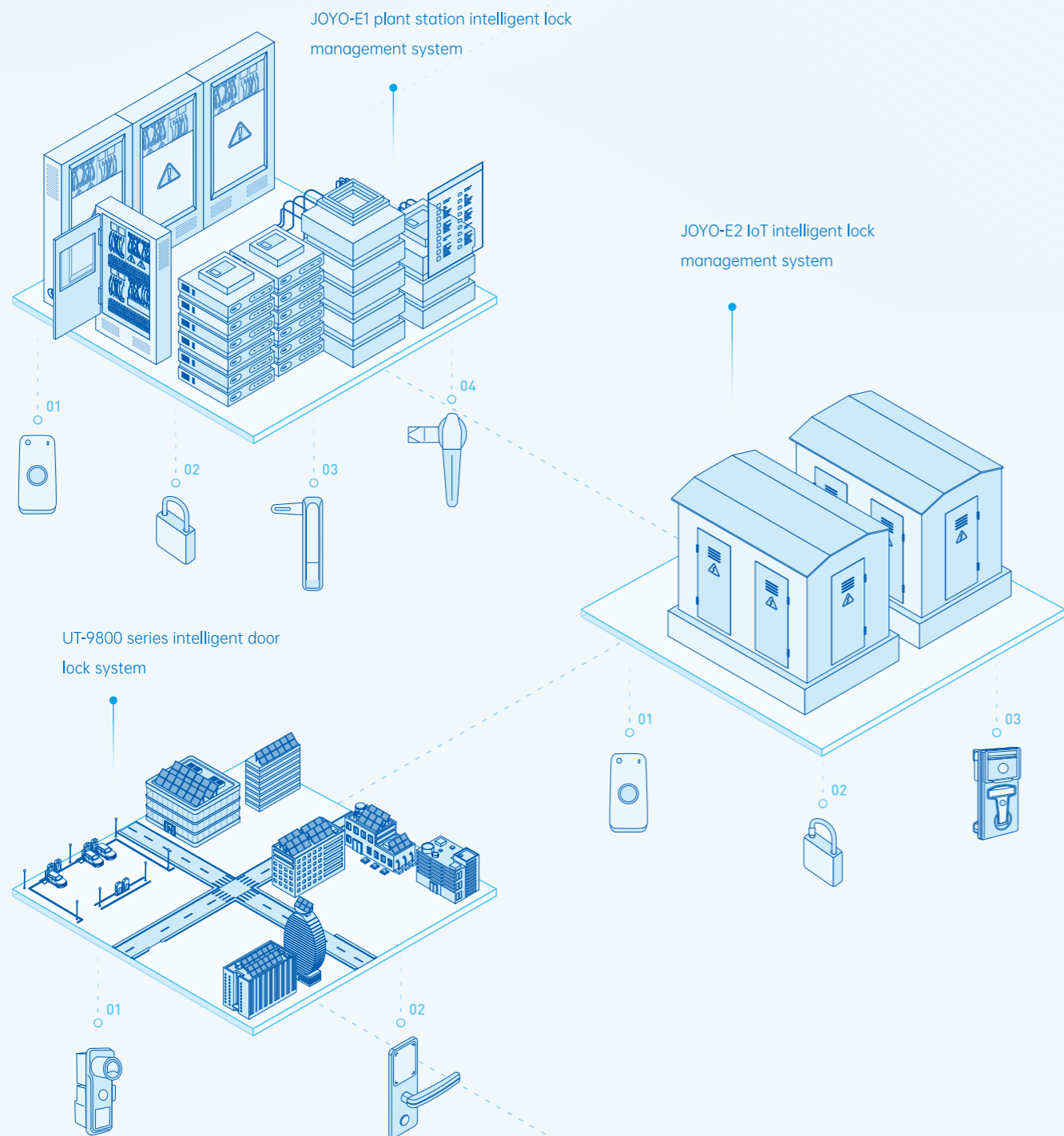


- UT-A300X online intelligent inspection system



Intelligent Lock and Control

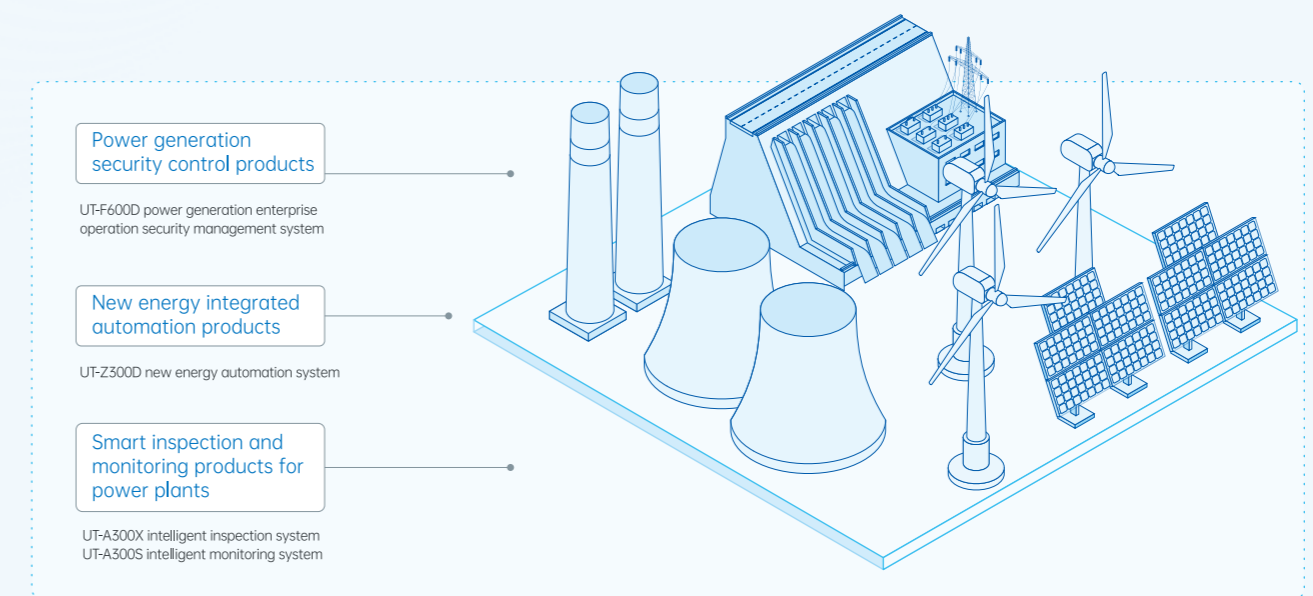
Based on the management needs of process control, permission management, scene compatibility, and convenient operation, Unitech leverages C-level anti-theft > high protection > authorized operation > identity recognition > one-key opening > non-sensing unlocking and other technologies to build a multi-protection intelligent lock control platform to ensure the security and convenience of personnel access and equipment access.



POWER GENERATION SOLUTIONS



The solution realizes the intelligent management of power generation enterprises' operation, equipment maintenance, outsourcing projects, security supervision and other businesses based on the operating characteristics of power generation enterprises such as thermal, water, wind and solar, and the needs of digital transformation, making production safer, smarter and more efficient, and helping to build intrinsically safe intelligent power plants.



Safety management and control for power generation

- Security control solutions for thermal power enterprises
- Security control solutions for hydropower enterprises
- Intelligent O&M control solutions for new energy centralized control
- Intelligent control solutions for wind farms
- Intelligent control solutions for energy storage stations

Comprehensive automation of new energy

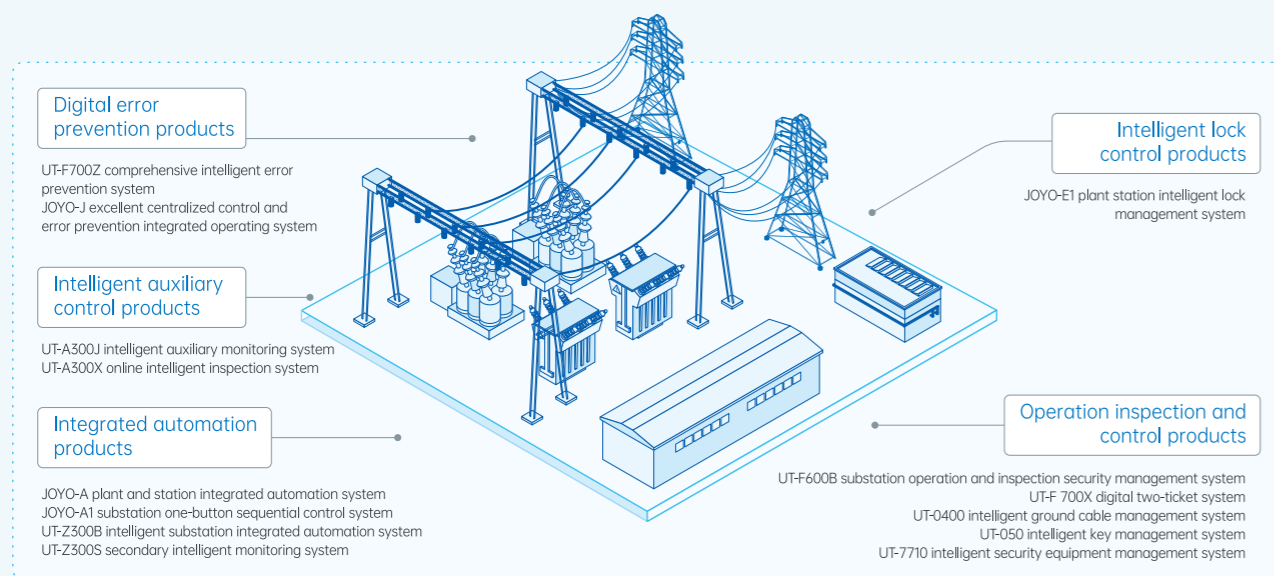
- Comprehensive monitoring solutions for centralized photovoltaics
- Comprehensive monitoring solutions for distributed photovoltaics
- Comprehensive automation solutions for booster stations

Smart inspection and monitoring for power plants

- Online monitoring solutions for wind turbine oil and liquid
- Online monitoring solutions for wind turbine towers

SUBSTATION SOLUTIONS

The solution adopts power grid and industrial and mining enterprises, integrates main and auxiliary equipment monitoring, and operation security control technology, and provides comprehensive automation, operation security control, auxiliary equipment monitoring and other products and services, realizing the operation monitoring, operation control, maintenance work, and automatic monitoring and intelligent security control of the operation of power grid and power main and auxiliary equipment, and ensuring the safe, reliable, economical and efficient operation of substation.



Digital error prevention

- Intelligent new electrical error prevention solution
- Comprehensive intelligent error prevention solution
- Panoramic digital centralized control error prevention solution
- Network topology logic
- maintenance error prevention solution
- Digital twin 3D error prevention solution

Integrated automation

- Plant and station comprehensive automation solution
- Intelligent substation comprehensive automation solution
- One-button sequential control solution
- Dual confirmation solution for knife switch
- Secondary equipment monitoring solution

Intelligent lock and control

- Plant and station E-key solution
- Substation gate control solution
- Communication interface lock control solution

O&M control

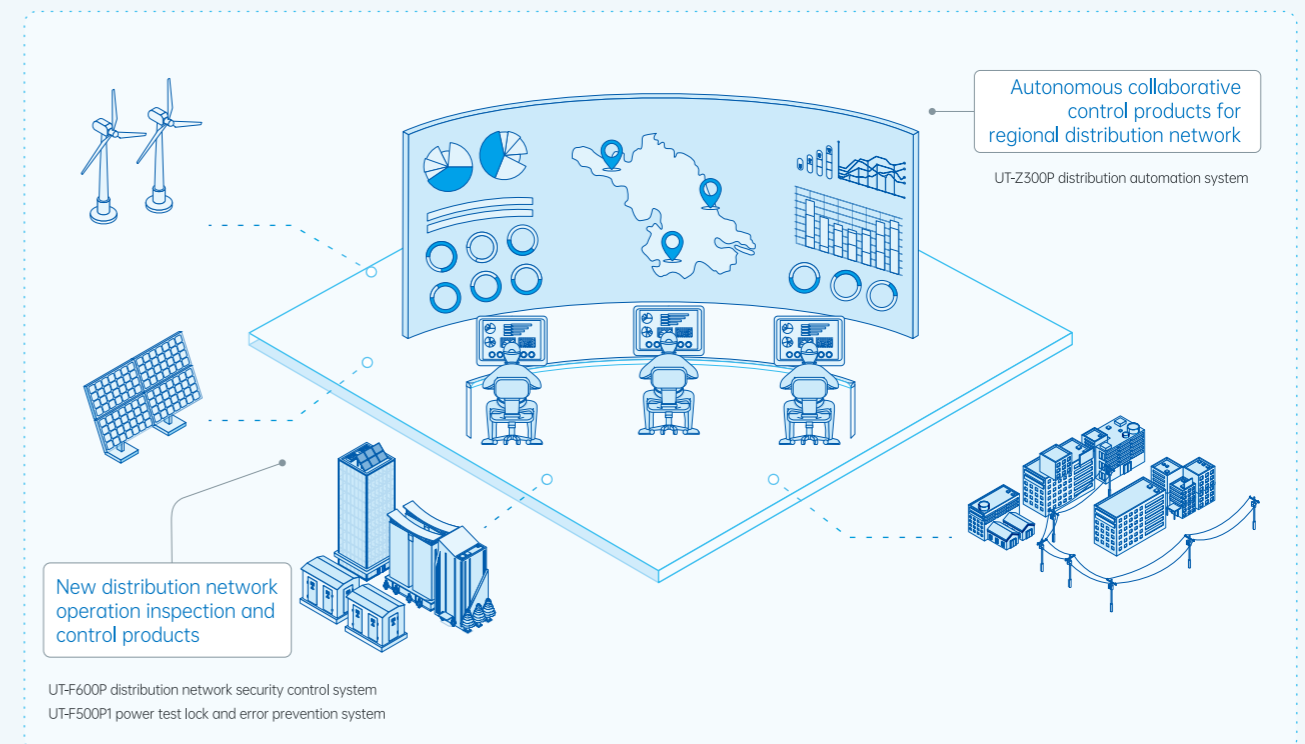
- Digital security control solution for full-process substation switching
- Substation operation and inspection security control solution
- Digital two-ticket solution
- Intelligent ground cable management solution
- Intelligent unlocking management solution
- Intelligent security equipment management solution

Intelligent auxiliary control

- Intelligent auxiliary control solution for substations
- Smart warehouse management solution
- Microenvironment online monitoring solution
- Smart battery O&M solution
- Intelligent inspection solution for substations
- One-button sequential control video double confirmation solution

POWER DISTRIBUTION SOLUTIONS

The solution realizes the orderly access of distributed power sources, flexible grid connection and coordinated optimization of multiple energy sources based on the new features of high proportion of distributed new energy, large-scale access of power electronic equipment and AC/DC interconnection; realizes the state perception of the whole operation process and the security control of the whole process by using technical means such as data cloud edge processing, state auxiliary prediction, and safe intelligent control, making the distribution O&M safer and smarter.



New distribution network inspection and control

- Digital security control solution for full-process substation switching
- Substation operation and inspection security control solution
- Digital two-ticket solution
- Intelligent ground cable management solution
- Intelligent unlocking management solution
- Intelligent security equipment management solution

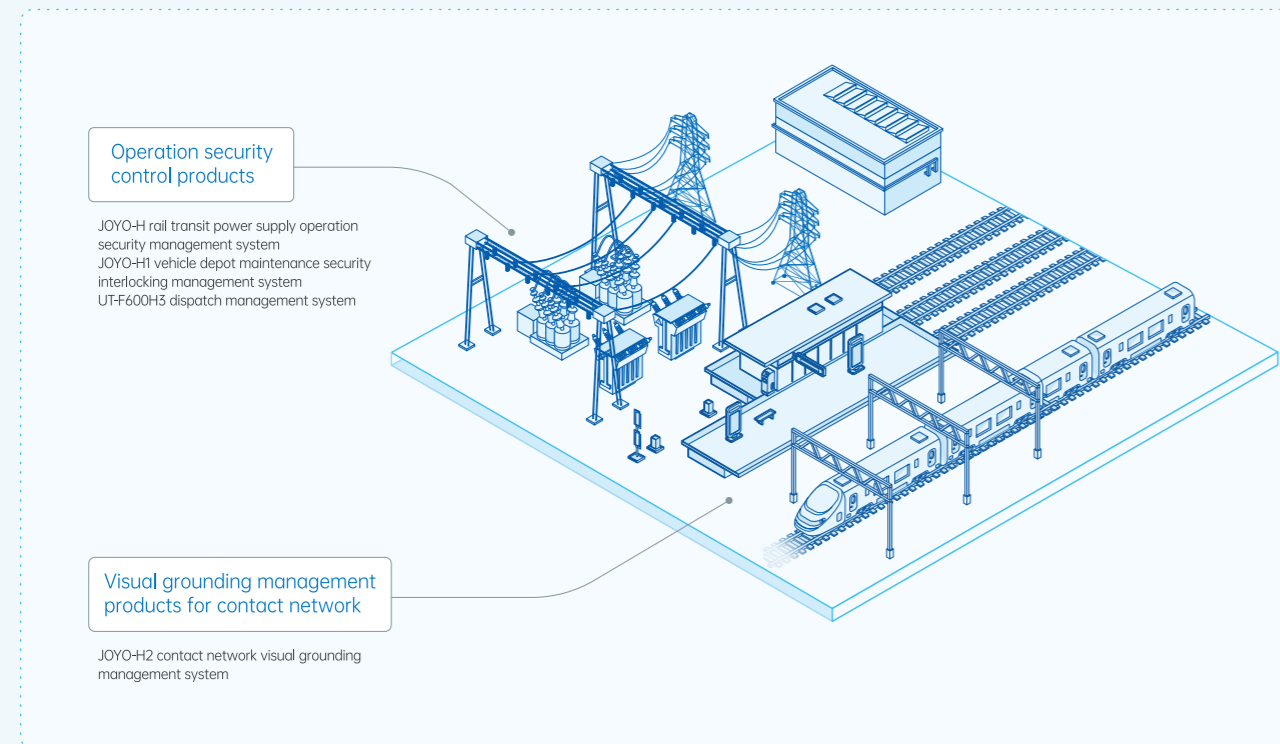
Intelligent auxiliary control

- Intelligent auxiliary control solution for substations
- Smart warehouse management solution
- Microenvironment online monitoring solution
- Smart battery O&M solution
- Intelligent inspection solution for substations
- One-button sequential control video double confirmation solution

RAIL TRANSIT SOLUTIONS



Combining the characteristics of the rail transit industry and utilizing advanced technologies, the solution provides intelligent solutions for rail transit safe O&M and efficiency improvement, comprehensively protects the security of personnel and equipment, improves operational efficiency, and ensures safe, standardized, and reliable operation of the rail transit power supply system.

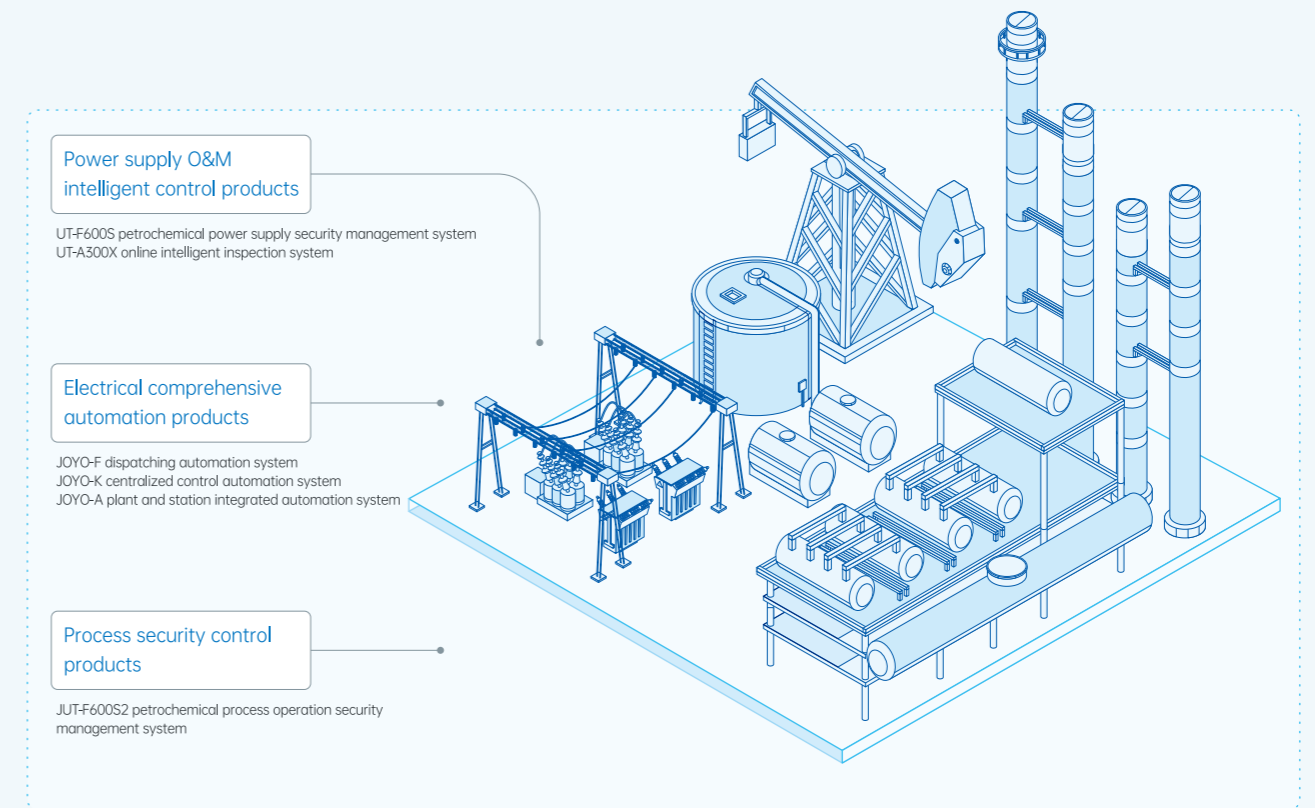


- | | |
|---|--|
| <p>Operation security control</p> <ul style="list-style-type: none"> • Security management solutions for rail transit power supply • Security interlocking management solutions for vehicle depot maintenance • Dispatch management solutions | <p>Visual grounding management of contact network</p> <ul style="list-style-type: none"> • Visual grounding solutions for rail transit contact network • Visual isolation grounding solutions for rail transit contact network • Visual grounding solutions for AC contact network |
|---|--|

PETROCHEMICAL SOLUTIONS



Combining Unitech industrial security control technology with the production characteristics of petrochemical enterprises, the solution realizes multi-dimensional panoramic monitoring of production equipment and visual security control of the entire process and all elements of O&M operations, and realizes intelligent applications such as intelligent inspection, status prediction, and intelligent decision-making assistance, so as to quickly and proactively respond to emergencies and provide strong guarantees for the safe production of petrochemical enterprises.

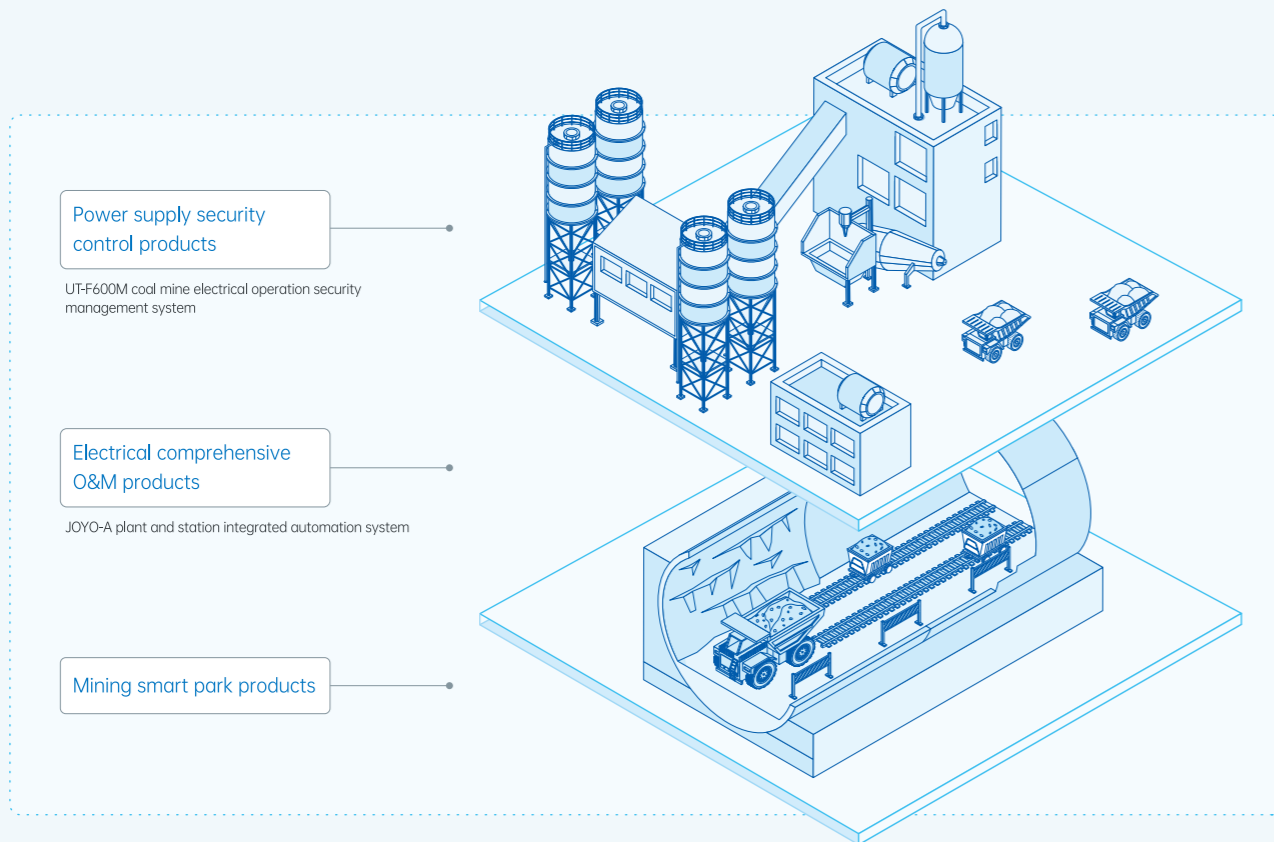


- | | | |
|--|--|--|
| <p>Power supply O&M intelligent control</p> <ul style="list-style-type: none"> • Petrochemical electrical intelligent O&M management solutions • Petrochemical electrical operation security control solutions • Petrochemical electrical intelligent inspection solutions | <p>Electrical comprehensive automation</p> <ul style="list-style-type: none"> • Petrochemical one-button sequential control solutions • Petrochemical regulation automation solutions • Petrochemical electrical integrated automation solutions | <p>Process security control</p> <ul style="list-style-type: none"> • Petrochemical process security control solution • Petrochemical process security control solutions |
|--|--|--|

COAL MINING SOLUTIONS



The solution provides electrical integrated automation, security management and control of operation and inspection, inspection and maintenance, and security management and control of underground power supply for power facilities such as ground substations and distribution stations, underground central substations and mining area substations of coal mining enterprises. It uses network topology, video linkage, intelligent verification and other technologies based on intelligent two-ticket and anti-error locking as core functions to build a security guarantee system for coal mine power supply systems.



JOYO-A plant and station integrated automation system

- Coal mine power supply operation security control solutions

Electrical comprehensive O&M

- Coal mine comprehensive automation solutions
- Coal mine enterprise electrical intelligent O&M solutions

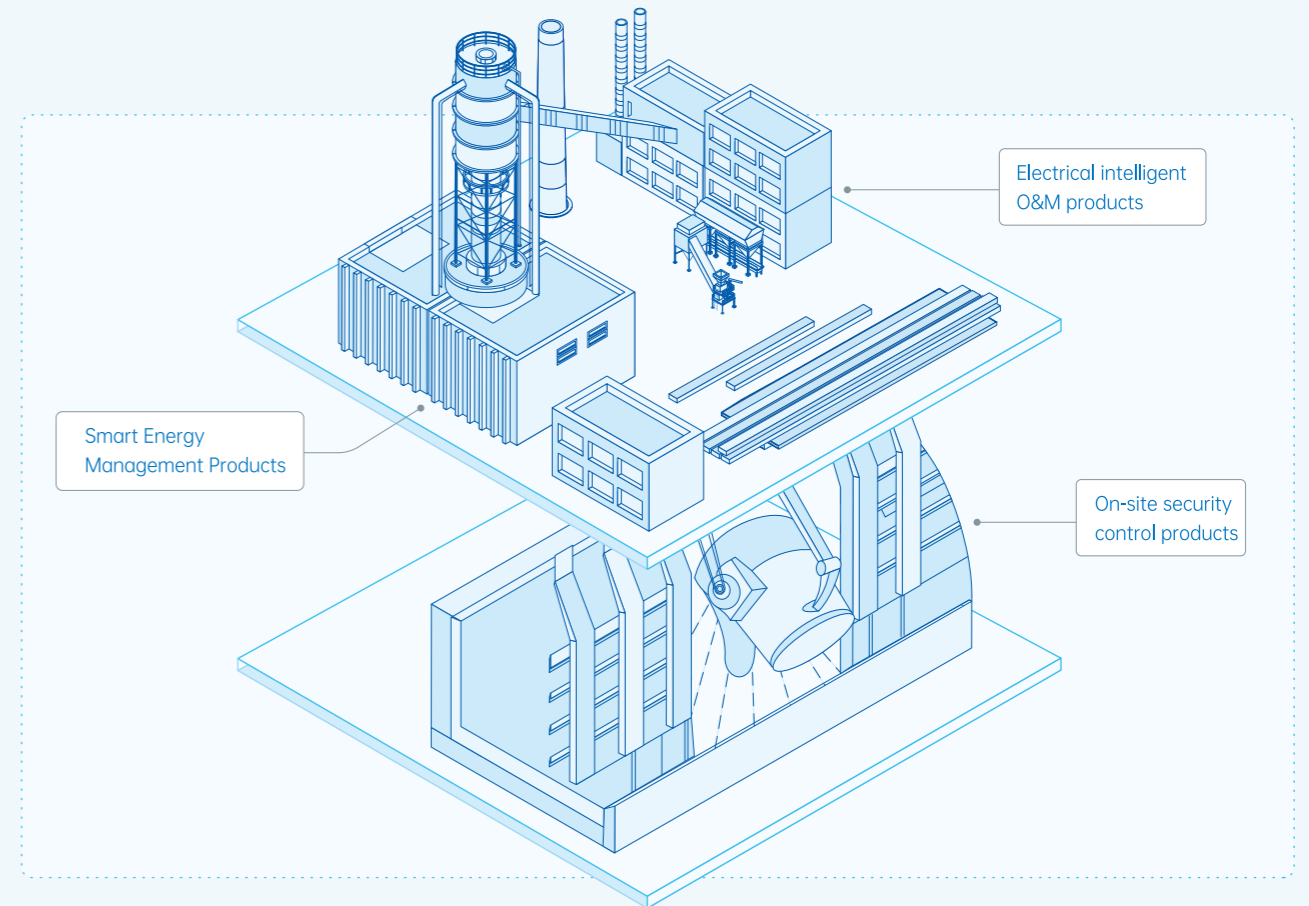
Mining smart park

- Digital coal mine smart park solutions

STEEL & METALLURGICAL SOLUTIONS



Combining the superior products of Unitech with the characteristics of the iron and steel metallurgical industry, the solution provides iron and steel metallurgical enterprises with a holistic solution of comprehensive monitoring, security control, and intelligent O&M based on advanced technologies such as integrated monitoring, full remote control of equipment, full control of operations, and intelligent inspections.



On-site security control

- Steel enterprise on-site security control solutions

Electrical intelligent O&M

- Steel enterprise electrical intelligent O&M solutions

Smart energy management

- Steel enterprise energy control solutions

TYPICAL ENGINEERING



Datang Tuoketuo Power Plant - the world's largest thermal power generation base



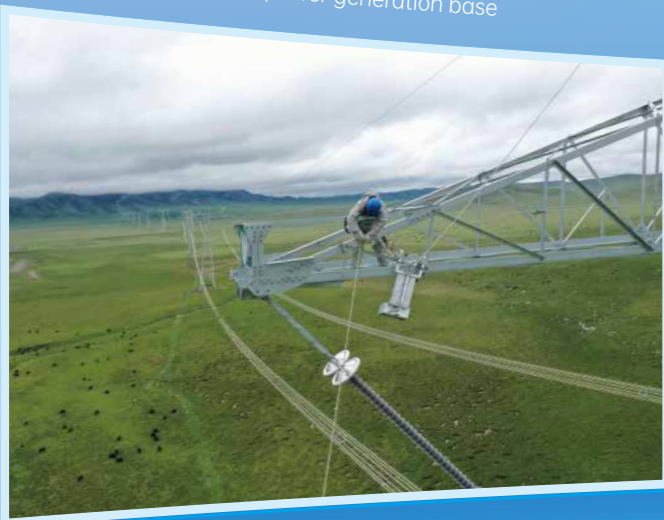
Winter Olympics - national power supply guarantee project



Hong Kong MTR - member of the International MTR Alliance



Hengyi Brunei Petrochemical - key construction project of the Belt and Road Initiative



Qing-Yu UHV - the world's first green power artery



Yalong River Basin Power Station - the largest power generation enterprise in Sichuan Province



Changsha medium and low speed maglev - China's first medium and low speed maglev railway



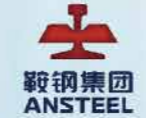
Zhenhai Refining and Chemical - the largest integrated refining and chemical enterprise in China

03 CHAPTER

SUSTAINABLE DEVELOPMENT

- Insist on leveraging technology for good
- Utilize intelligent security technology
- Minimize production security accidents
- Contribute to the construction of new power systems
- Together with our partners
- Promote sustainable development

PARTNERS



* Due to space limitations, only some partners are shown above

SOCIAL RESPONSIBILITY

Unitech is committed to ensuring safe production in enterprises and promoting security by using intelligent security technologies. We work hand the government, partners, industry and academic organizations to leverage the advantages of intelligent security technology and platforms through investment in talent and core resources, and continue to respond to the needs of the country and the times under the guidance of technology for good, and coexist and prosper with the evolving society.

Continuously ensure industrial security

Deeply engaged in the field of industrial security management and control.

30+ years

Greatly reduce production accidents



Social welfare and charity

- Donation to support education: Targeted funding for poor students in western mountainous areas for many years
- Disaster relief: Set up a working group to rush to the disaster area in Zhengzhou and provide material and technical support
- Electricity security education for teenagers: Awarded as a model enterprise for electricity security education for primary and secondary school students for many consecutive years



Youth charity



Environmental protection, energy conservation and green development

- Obtain ISO14001 environmental management system certification
- Build a low-carbon smart park and practice the concept of green development
- Lead green office and promote energy conservation and consumption reduction



2018 tree planting photo



Youth charity



Rush to aid Zhengzhou

Contribution to regional economy

Cumulative tax payment in the past ten years

600 million yuan



- Rated as "A-level taxpayer" for many consecutive years, with cumulative tax payment of more than 600 million yuan in the past ten years
- Recruit talents widely, provide multiple welfare guarantees, and solve employment problems for the society.
- Participate in the new energy intelligent grid industry alliance, and support the upgrading of the intelligent grid



Absorb talents and solve social employment



Xiangzhou Innovation Driven Development Conference



2021 Zhuhai Science and Technology Innovation Annual Conference

Partners and Industry Development

Participate in the compilation of standards

18 standards



- Participate in the standardization of industry technical specifications, participate in the compilation of 18 standards, and promote industry development
- Establish a national CNAS laboratory, postdoctoral workstation and Guangdong Engineering Technology Research Institute Research and development center, promote the deep integration of industry, university and research
- Continuously enrich the product system by adopting cutting-edge technologies to provide comprehensive and reliable intelligent security solutions for the industrial field

Technological innovation and independent control

Participate in national, provincial and ministerial scientific research projects

60+ projects



- Participate in more than 60 national, provincial and ministerial scientific research projects, and insist on technological innovation
- Practice independent control of products and won the second prize of Huawei Kunpeng Application Developer Competition
- Reach industry-university-research cooperation agreements with many universities and research institutes to promote key technology research

ENTERPRISE VISION

Be a leader in intelligent security technology

Focus on security and efficiency, rely on the wisdom and efforts of Unitech people, adhere to independent innovation, provide users with advanced, practical and reliable products and quality services, and become a leader in security control and intelligent solutions.

Continuously expand product application industries, provide products and services for more customers, and share success and honor with partners, shareholders and employees.

Continuously pursue excellence, fulfill social responsibilities, become a modern high-tech enterprise with sustainable development, build an international first-class brand, and become a leading enterprise in the field of intelligent security production.